



AI for Health: Evaluation of Applications and Datasets

2nd Workshop on Law, Society and Artificial Intelligence: Interdisciplinary Perspectives on AI Safety

June 10th, 2025

Claudia Rosas, PhD

Social Link Analytics Unit & Bioinfo4women (B4W) Programme

Life Science Department

Barcelona Supercomputing Center



Funded by
the European Union

The research leading to these results has received funding from the Horizon Europe Programme under the Marie Skłodowska-Curie grant agreement No 101183031. Views and opinions expressed are however those of the author(s) only and do not necessarily reflect those of the European Union. Neither the European Union nor the granting authority can be held responsible for them.

HAI2025

20 YEARS
BSC





Biomedicine and Healthcare are high-stakes fields

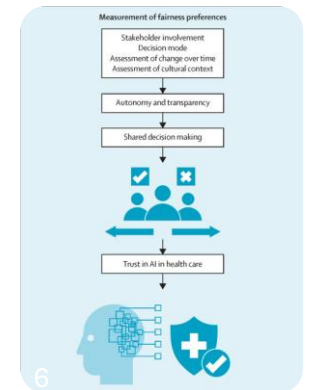
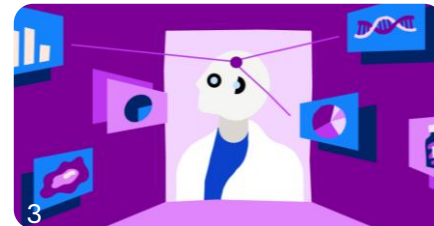
*Systems cannot rely barely on just accuracy or efficiency → Now we are facing the need to address **trust, fairness, accountability and human-AI collaborations.***

• AI Potential:

- Drug discovery;
- Medical imaging diagnostics;
- Clinical Decision Support Systems;
- Among others

• AI Challenges:

- Ethical governance;
- Safety;
- Fairness...



AHEAD at a glimpse



Lack of consensus on standardised approaches for responsible implementation



Comprehensive evaluation of AI from various perspectives, for the responsible development and deployment of high-risk systems and models, such as those used in healthcare.



Based on a global, transdisciplinary, international community to establish a Methodology and implement ethical, legal, human, societal, and technical standards for evaluating AI systems in healthcare and biomedicine.



Ensure quality healthcare for all through responsible AI development.

Partners

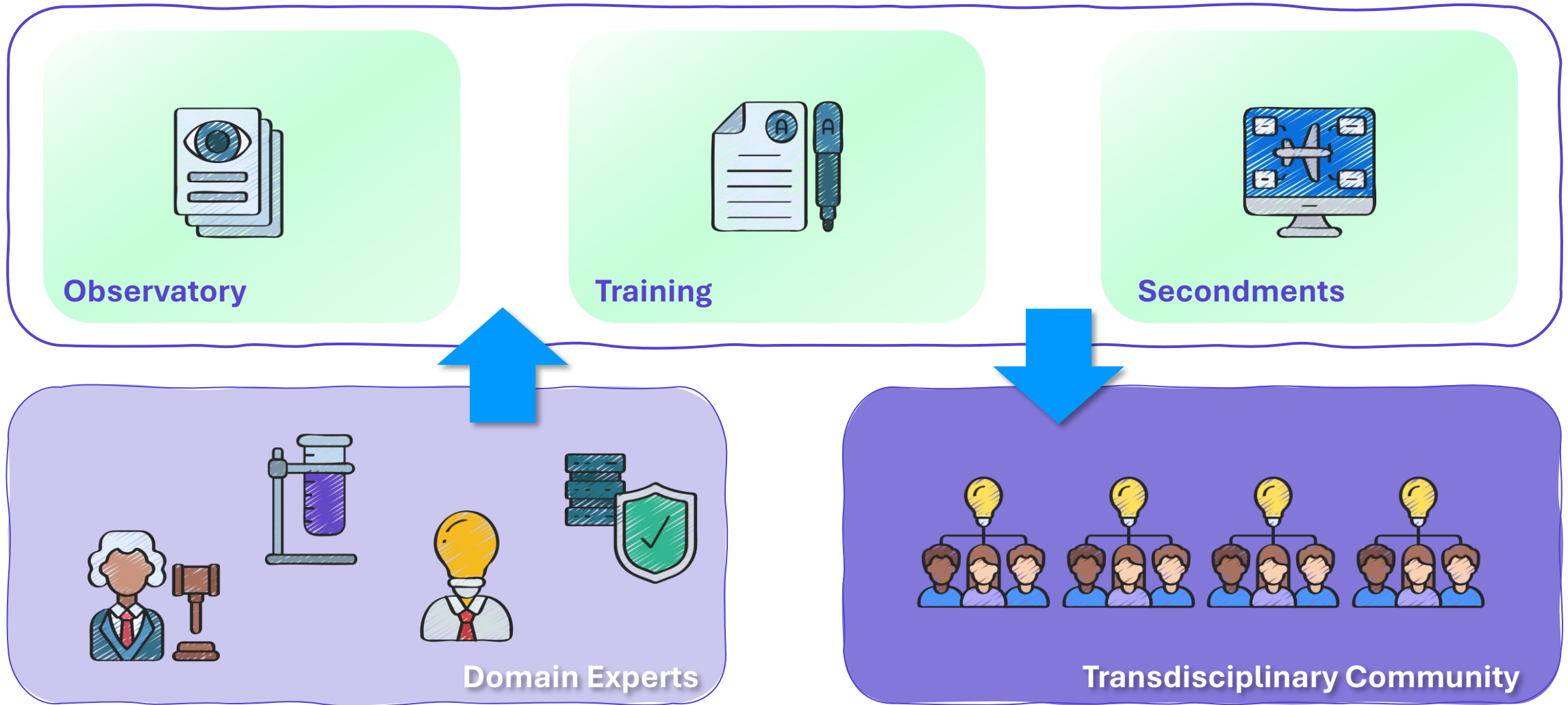


AHEAD : Expertise Partners

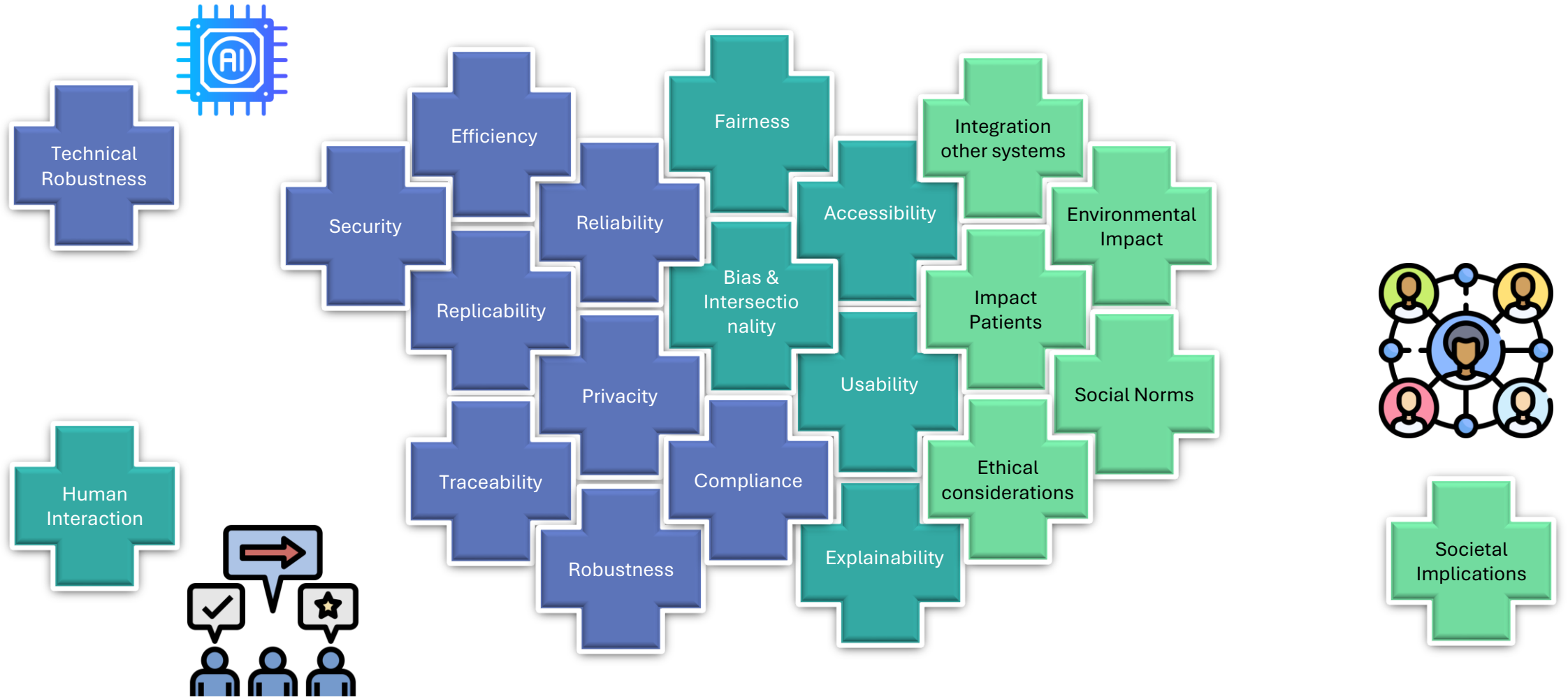
The consortium assembles experts across various domains, all of them working on issues related to AI and health, including

AI Technology	Barcelona Supercomputing Center Centro Nacional de Supercomputación 		CERTH CENTRE FOR RESEARCH & TECHNOLOGY HELLAS
Software Development	Barcelona Supercomputing Center Centro Nacional de Supercomputación CERTH CENTRE FOR RESEARCH & TECHNOLOGY HELLAS		NYU CENTER FOR BIOETHICS HADASSAH
Health	barcelonaβeta BRAIN RESEARCH CENTER		Barcelona Supercomputing Center Centro Nacional de Supercomputación
Law	UNIVERSITÀ DI TRENTO		BBMRI-ERIC® PRISMO Asociación para la DIVERSIDAD afectivo-sexual y de género en CIENCIA, TECNOLOGÍA E INNOVACIÓN kw bioinfo 4women
Sociology	UNIVERSITY OF HELSINKI		lygature

AHEAD's methodology



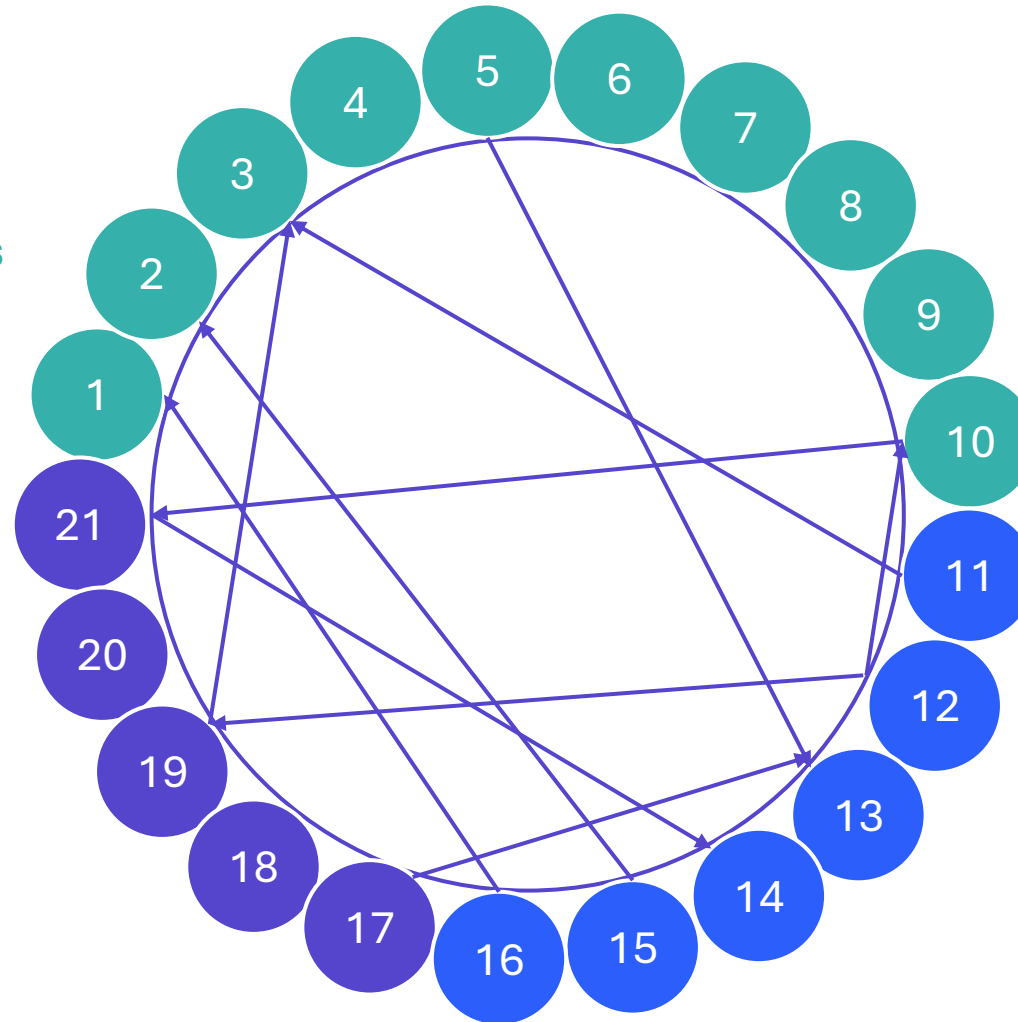
Indicators for AI in Healthcare & Biomedicine



Indicators for AI in Healthcare & Biomedicine

Technical Indicators

1. Efficiency & Effectiveness
2. Tech. Resources
3. Accessibility
4. Reliability
5. Data Security & Privacy
6. Compliance
7. Replicability
8. Traceability
9. Robustness
10. Explainability



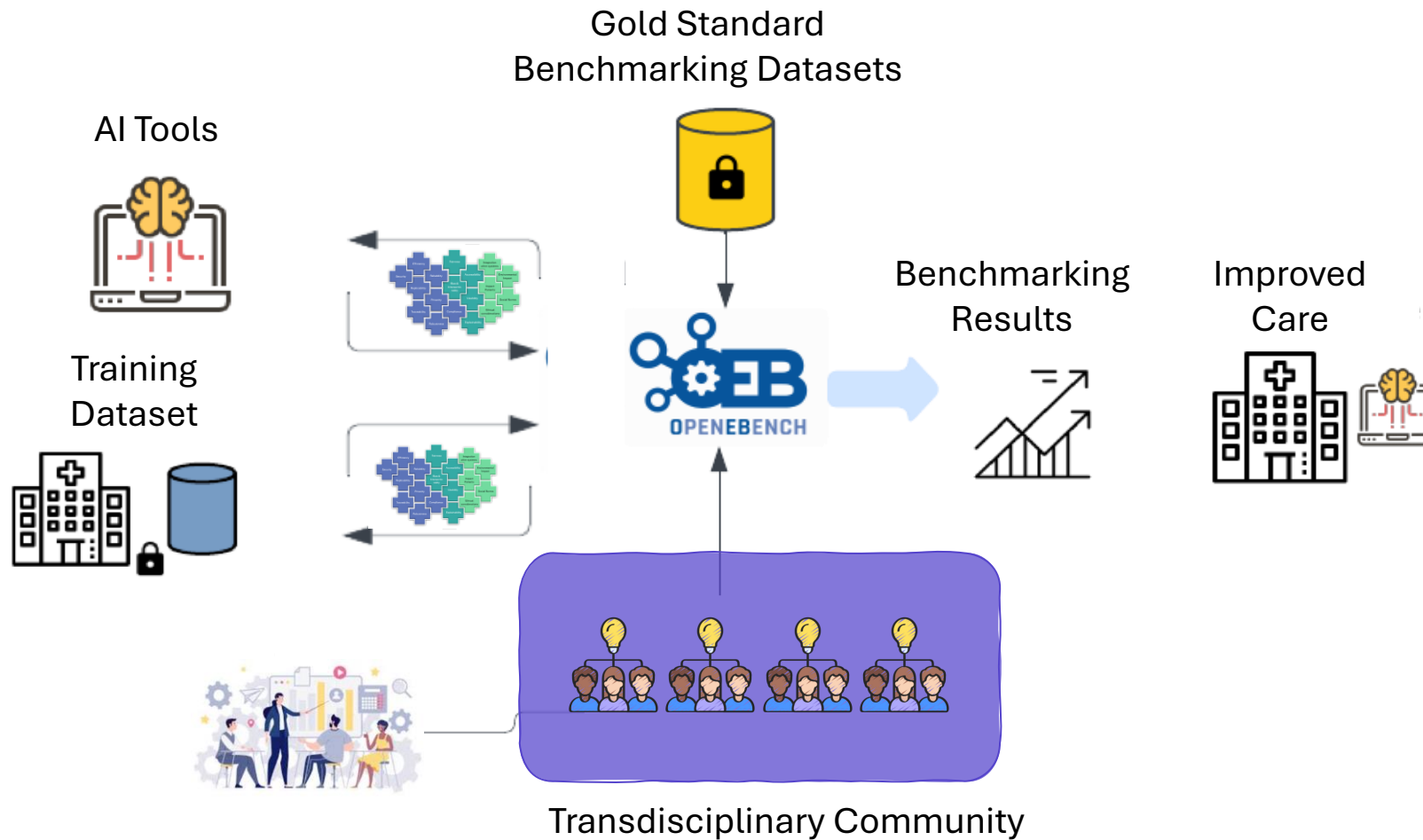
Societal Indicators

11. Integration with Healthcare Systems
12. Impact on Patients & Providers
13. Ethical Considerations
14. Social Norms & Values
15. Economic Viability
16. Environmental Impact

Human Interaction Indicators

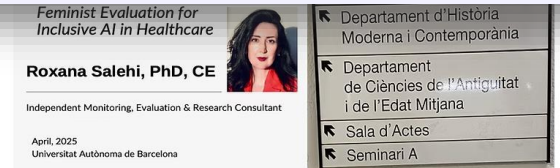
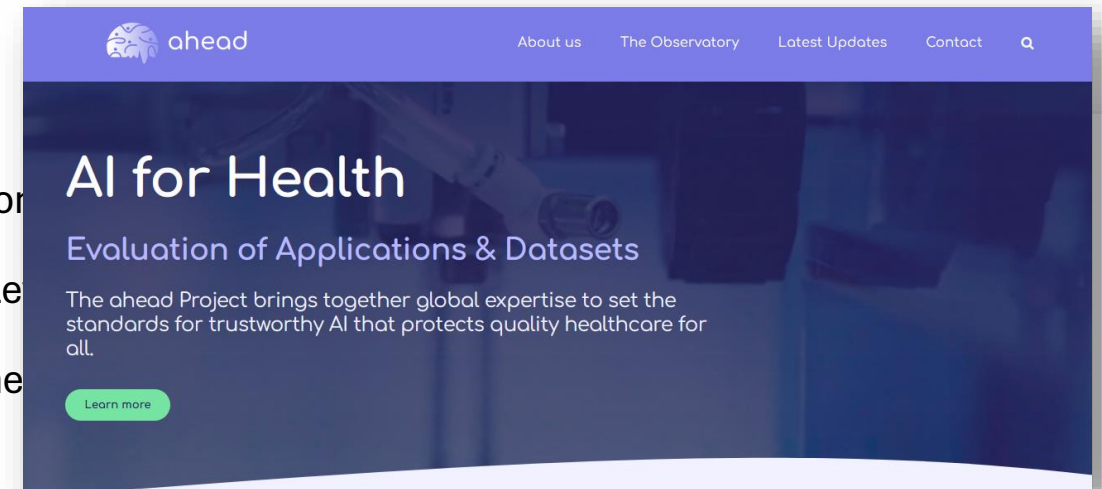
17. Fairness & Equity
18. Bias & Intersectionality
19. Usability
20. Accessibility
21. Transparency

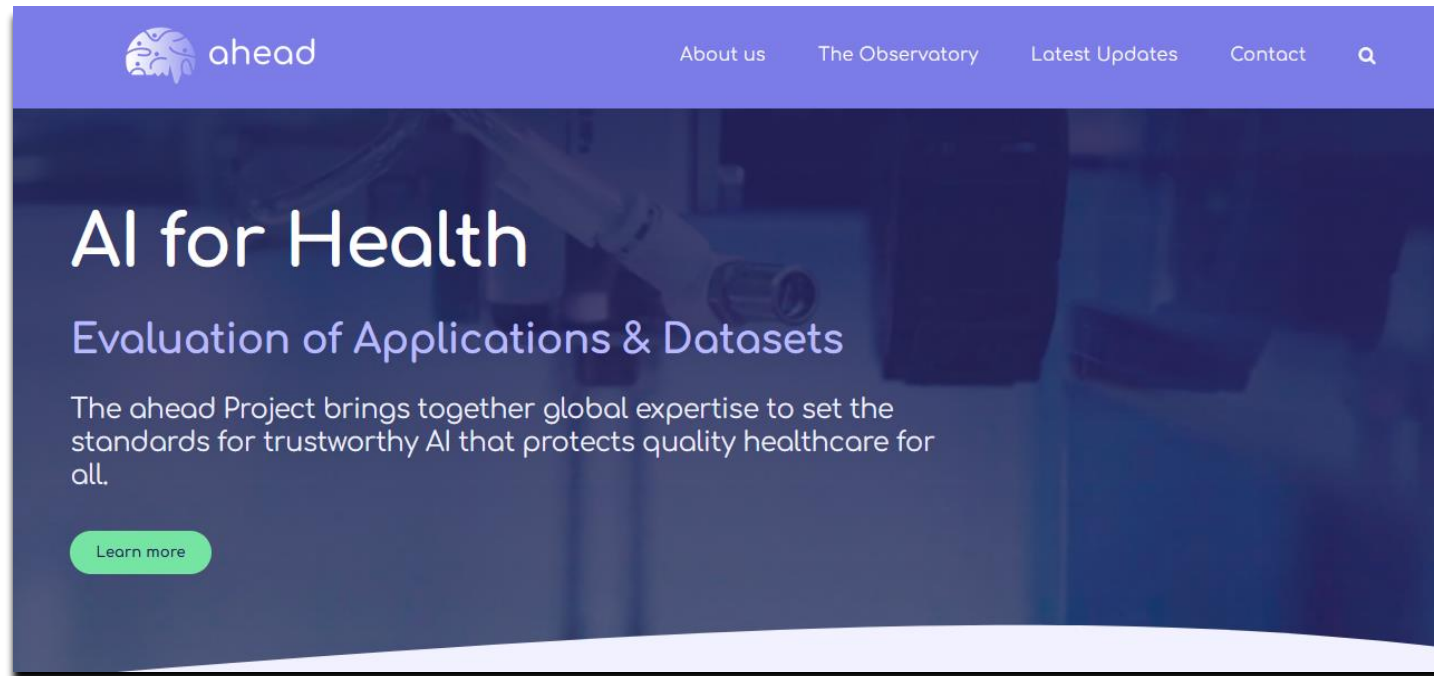
Extension of OpenEBench: Benchmarking of AI Applications



Current accomplishments

- First Secondment completed (Law to technical: University of Trento to Barcelona Supercomputing Center)
- First Researchers from BSC abroad (currently in CETH, Greece)
- Training scheduled to run in Barcelona from June 27th until July 25th, 2025. Nostrum Biodiscovery hosting 7 researchers from all the partners.
- Our main web page is up and running: ahead-msca.eu
- First approximations about how to measure ethical and legal implications
 - AI Act, GDPR, Ethical considerations at European and National Level
 - Active networking alongside Barcelona, Spain and Europe in Geneva
- And more to come...





<https://ahead-msca.eu/>

Thank you for your attention!

Claudia Rosas
(claudia.rosas@bsc.es)

References

1. Fleming, N. (2018). How artificial intelligence is changing drug discovery. *Nature*, 557(7707), S55–S57. <https://doi.org/10.1038/d41586-018-05267-x>
2. National Institutes of Health. (2024, July 23). *NIH findings shed light on risks and benefits of integrating AI into medical decision-making*. <https://www.nih.gov/news-events/news-releases/nih-findings-shed-light-risks-benefits-integrating-ai-into-medical-decision-making>
3. Healthcare Transformers. (2025, January 15). *Artificial intelligence in clinical decision support*. <https://healthcaretransformers.com/digital-health/artificial-intelligence/artificial-intelligence-clinical-decision-support/healthcaretransformers.com+4>
4. UNESCO. (2021). *Recommendation on the ethics of artificial intelligence*. <https://unesdoc.unesco.org/ark:/48223/pf0000385082>
5. Layne, R. (2024, June 4). *AI in the health insurance industry: An explainer and research roundup*. The Journalist's Resource. <https://journalistsresource.org/home/ai-in-the-health-insurance-industry-explainer-and-research-roundup/>
6. Mittelstadt, B. D., & Floridi, L. (2024). Measuring fairness preferences is important for artificial intelligence in health care. *The Lancet Digital Health*, 6(4), e200–e201. [https://doi.org/10.1016/S2589-7500\(24\)00059-1](https://doi.org/10.1016/S2589-7500(24)00059-1)